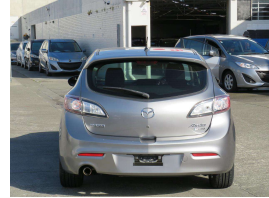


# 2009 Mazda AXELA 2.0 hatch



## VEHICLE INFORMATION

### Cash Price

Includes GST

# \$11,450

+ on-road-costs of \$450

Finance this vehicle  
from only

# \$71.98

per week\*

Total Amount Payable

\$14,972.06



Gain peace of mind  
with Mechanical  
Breakdown Insurance.  
Ask us how.

### Body

5 door, Hatchback

### Odometer

61,978 km

### Engine

2000 cc

### Fuel Type

Petrol

### Transmission

Automatic, Front Wheel

### Wheels

-

### VIN

7AT0C13JX21106589

### Reg No.

-

### Ext Colour

Silver

### History

-

### Seats

5 seats

### Interior

Black

### Audio

CD Player

### Stock ID

10622

### Exterior Features

- » Electric Mirrors (Retractable)
- » Fog Lights
- » Rear Wiper

### Interior Features

- » 2 Airbags
- » Air Conditioning
- » CD player
- » Central Locking

### Mechanical Features

- » 16 Valve
- » AA Appraised
- » ABS Braking
- » Chain Driven engine
- » Push Start Button



DJ Auto, Phone 03 377 3999, Email info@djauto.co.nz

190 Wordsworth Street, Sydenham, City Centre, Christchurch 8011, New Zealand

www.djauto.co.nz

\* Finance calculation based on a 48 month term, no deposit and with an example annual fixed interest rate of 9.95%. Actual interest rate may be higher or lower. Includes an establishment fee of \$410.00. Full term total amount payable of \$14,972.06. Estimate only, not an offer of finance. Terms, conditions and lending criteria apply.