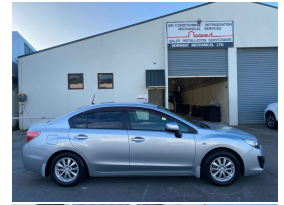


2014 Subaru Impreza G4 1.6l



VEHICLE INFORMATION

Cash Price

Includes GST
Excludes on-road costs of \$450

\$11,950

Note: A Clean Car fee/rebate does not apply to this vehicle

Finance this vehicle from only

\$74.90

per week*

Total Amount Payable

\$15,580.18



Gain peace of mind with Mechanical Breakdown Insurance. Ask us how.

Body

5 door, Sedan

Odometer

68,331 km

Engine

1600 cc

Fuel Type

Petrol

Transmission

Automatic, Front Wheel

Wheels

Factory Alloys

VIN

7AT0GF09X22006602

Reg No.

-

Ext Colour

Silver

History

-

Seats

5 seats

Interior

Black

Audio

-

Stock ID

11812

Exterior Features

- » Electric Mirrors (Retractable)

Interior Features

- » Air Conditioning
- » CD player
- » Central Locking

Mechanical Features

- » 16 Valve
- » AA Appraised
- » ABS Braking
- » Chain Driven engine



DJ Auto, Phone 03 377 3999, Email info@djauto.co.nz
190 Wordsworth Street, Sydenham, City Centre, Christchurch 8011, New Zealand
www.djauto.co.nz

* Finance calculation based on a 48 month term, no deposit and with an example annual fixed interest rate of 9.95%. Actual interest rate may be higher or lower. Includes an establishment fee of \$410.00. Full term total amount payable of \$15,580.18. Estimate only, not an offer of finance. Terms, conditions and lending criteria apply.